

TAFE QUEENSLAND

TAFE AT SCHOOL

2024 COURSE GUIDE

BUNDABERG

GYMPIE

HERVEY BAY

MARYBOROUGH

SUNSHINE COAST



**INDUSTRY
INTEGRATED**



**UNIVERSITY
PATHWAYS**



**JOB-FOCUSED
TRAINING**

**MAKE
GREAT
HAPPEN**

tafe
Queensland



CEO MESSAGE

TAFE Queensland has a 140 year history of serving Queensland's communities as the largest, most experienced vocational education and training (VET) provider in the state. Our training is delivered to over 130,000 students each year at more than 60 locations across Queensland, and we offer more than 500 practical, industry-relevant courses ranging from entry-level certificates to bachelor degrees.

Specifically designed to help you get more out of high school, TAFE Queensland also offers a range of courses as part of our TAFE at School program. The TAFE at School program is for students in Years 10, 11 or 12 who want to undertake VET study with TAFE Queensland as part of their high school curriculum. Delivery of the TAFE at School program may be undertaken at a TAFE Queensland location, in selected schools or in the workplace as a school-based apprentice/trainee.

The great thing about these courses is that they fit around your existing studies. Completing a qualification through our TAFE at School program also gives you direct entry into most of our courses at TAFE Queensland, access to a variety of university pathways by contributing to your ATAR, and multiple ways to get started on your career or trade qualification.

This guide features a range of information about the TAFE at School program, from courses to university pathways and intakes to payment options, as well as information tailored for your parents and schools. For further information you can also visit our website at tafeqld.edu.au/schoolstudents, call **1300 308 233**, or visit your local campus to speak to our friendly customer service team.

I encourage you to speak to your teachers, VET coordinator and/or guidance counsellor, friends and family about your future. You define your greatness, and TAFE Queensland has an option and pathway that is right for you in 2023 and beyond.

Warm regards,

Mary Campbell
Chief Executive Officer (CEO)
TAFE Queensland

The information contained in this guide is correct at time of printing, April 2023. For the most up-to-date information please refer to our website at www.tafeqld.edu.au.

In many areas of Australia it is considered offensive to publish photographs of Aboriginal and Torres Strait Islander people who are deceased. Readers are warned that this publication may inadvertently contain such photographs.

CONTENTS

| | |
|--|----|
| How to apply | 04 |
| Study areas | 06 |
| INFORMATION FOR SCHOOL STUDENTS | |
| Why study at TAFE Queensland..... | 08 |
| About TAFE at School..... | 09 |
| Term dates and intakes..... | 10 |
| Student support | 10 |
| Costs and payment options..... | 10 |
| Pathways to your future | 11 |
| Post-school options | 12 |
| OUR CAMPUSES | |
| Our facilities | 13 |
| Campus locations..... | 13 |
| Getting to campus..... | 13 |
| INFORMATION FOR PARENTS | |
| About vocational education and training (VET) | 14 |
| Why TAFE Queensland | 14 |
| Parents' guide for surviving senior schooling and beyond | 14 |
| INFORMATION FOR SCHOOLS | |
| How TAFE Queensland can help..... | 15 |
| Partnerships with Schools program | 15 |
| IVET online portal..... | 15 |
| Teacher aide training..... | 15 |
| COURSE INFORMATION | |
| Agriculture and horticulture | 16 |
| Animal care | 17 |
| Automotive | 18 |
| Beauty and hairdressing | 19 |
| Building and construction | 21 |
| Business | 23 |
| Community services | 25 |
| Creative | 26 |
| Electrotechnology | 29 |
| Engineering | 31 |
| Hospitality and cookery | 32 |
| ICT, information and networking | 34 |
| Manufacturing and design | 35 |
| Health..... | 36 |
| Sport and fitness | 38 |
| Tourism | 40 |
| Courses by location..... | 42 |



GET MORE OUT OF HIGH SCHOOL WITH TAFE AT SCHOOL

If you're a Year 10, 11 or 12 student, you may be able to complete a TAFE Queensland qualification while you're still at school.

Choose from a variety of certificate I to diploma courses from a range of study areas, from construction to community services, hospitality to health care, and everything in between.

HOW TO APPLY

To submit an application for a TAFE at School course, visit **www.tafeapply.com**.

You'll need the application code for the course in the location you want to apply for. These can be found at the back of this guide. You will also need your Learner Unique Identifier (LUI) and Unique Student Identifier (USI) numbers. If you don't have a USI yet, head to **www.usi.gov.au** to get one.



STUDY AREAS

Studying at TAFE Queensland gives you access to multiple pathways to kick-start your career, even while you're still at school. Whether you dream of a career in fashion or fitness, automotive or animal care, community services or engineering, we have a course that's right for you.



AGRICULTURE AND HORTICULTURE 16

Learn while enjoying the outdoors and watch your work come to life. Turn your passion for conservation into a career, or get ready for a life on the land.



ANIMAL CARE 17

Turn your love for animals into a career. Develop the skills to care for a variety of animals, as well as an understanding of the administration and business side of the industry.



AUTOMOTIVE 18

If you have a passion for cars, trucks, boats, or bikes, then rev up your career with an automotive course. Develop your skills and choose to specialise in a range of areas.



ELECTROTECHNOLOGY 27

Spark some life into your career. Develop practical skills to work across a range of specialisations including electronics, and electrical engineering.



ENGINEERING 29

Engineer your future for a hands-on career. From boiler making to welding, and fabrication to machining, choose to specialise your engineering skills across a range of areas.



HOSPITALITY AND COOKERY 30

The opportunities in hospitality are endless. You will gain in-demand skills to travel the world. Work behind-the-scenes in the kitchen, or front of house at a restaurant, café, hotel or resort.



BEAUTY AND HAIRDRESSING 19

Style your career with courses in beauty or hairdressing. Learn how to use your imagination to help others look and feel beautiful.



BUILDING AND CONSTRUCTION 21

Get hands-on and lay a solid foundation for your career. Develop practical skills to work in the building and construction industry with a range of trade courses.



COMMUNITY SERVICES 23

Make a difference with a career in community services. You'll work to promote the safety and well-being of children, families, and at-risk members of the community.



ICT, INFORMATION AND NETWORKING 32

Technology puts the world at your fingertips. Develop your technical expertise and work in ICT, web and software development, cyber security or telecommunications.



AUTONOMOUS TECHNOLOGY 33

Combine your love of design with hands-on, practical work. Jump into a variety of industry areas such as cabinet or furniture making.



HEALTH 34

Help people in their time of need with a career in nursing and healthcare. Work in nursing, aged care, primary health care, allied health, dental, pathology, or laboratory science.



CREATIVE 24

Turn your creative talents into a rewarding career. Develop the skills to work in fashion, photography, graphic design or visual arts.



SPORT AND FITNESS 36

Strengthen your potential with a career in sport and fitness. Work as a personal trainer, group exercise instructor, coach, or outdoor adventure guide.

INFORMATION FOR SCHOOL STUDENTS

WHY STUDY AT TAFE QUEENSLAND

TAFE Queensland is the largest, most experienced training provider in the state. It's a big statement, but one that's backed up by research and our impressive track record.

**MORE THAN
135 YEARS**
OF EXPERIENCE

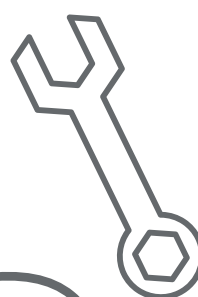


**OVER
550+**
UNIVERSITY PATHWAYS



WE TRAIN APPROXIMATELY

**110,000
STUDENTS**
EVERY YEAR

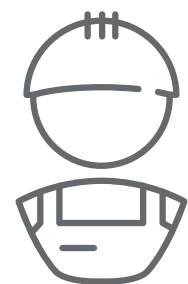


**PRACTICAL,
HANDS-ON**
COURSES THAT GET YOU
JOB READY SOONER

**INDUSTRY-
EXPERIENCED**
TEACHERS, EAGER TO
SHARE THEIR KNOWLEDGE



**MORE
THAN
500**
ENTRY-LEVEL CERTIFICATES
TO BACHELOR DEGREES



**PURPOSE
BUILT**

FACILITIES, SIMULATING
A REAL WORLD WORK
ENVIRONMENT



50+
LOCATIONS
ACROSS QUEENSLAND

**ALMOST
85%**

OF GRADUATES GO ON TO
WORK OR FURTHER STUDY



**FLEXIBLE AND
SUPPORTIVE**
LEARNING ENVIRONMENT



ABOUT TAFE AT SCHOOL

BENEFITS OF TAFE AT SCHOOL

- Fits around your senior studies
- Get valuable Queensland Certificate of Education (QCE) credits*
- May contribute to your Australian Tertiary Admission Rank (ATAR)*
- Direct entry to any related TAFE Queensland course^
- Open up a variety of university pathways
- Gain credits towards an apprenticeship, diploma or university studies
- Build practical skills in an adult learning environment
- Get work ready

FLEXIBLE STUDY OPTIONS

TAFE Queensland offers flexible study options so you can gain a VET qualification while you're still at school in a way that best suits you.

ON CAMPUS

TAFE Queensland offers some of the best training facilities in the state, with advanced, industry-standard workspaces and classrooms. All training is delivered in an adult learning environment, so you'll get a taste of what it's like to study in a tertiary setting. You'll also learn from our highly-qualified teachers and benefit from their vast experience.

AT SCHOOL

Many Queensland schools have partnered with TAFE Queensland to deliver vocational qualifications. School teachers are given specific training so they are qualified to deliver TAFE Queensland courses. Even if you undertake your training at school, you will still receive a TAFE Queensland qualification when you complete your course.

INDUSTRY EXPERIENCE

Some TAFE at School courses require you to complete work placements, or in some instances, to work in the industry. This gives you the opportunity to build your skills and gain confidence dealing with real-life situations. Work placement requirements should be discussed with your teacher upon beginning your studies.

TRADE TASTER

Year 10 school students have access to a Trade Taster program, which is funded by the Queensland Government. This is unique to TAFE Queensland and offered at no cost. The program allows students to experience the vocational industry by studying one unit of competency from creative to community services.

SCHOOL-BASED APPRENTICESHIP OR TRAINEESHIP

TAFE Queensland offers both school-based apprenticeships and traineeships, which get you work-ready and a step ahead of your peers.

Becoming a school-based apprentice or trainee gives you skills in a vocation or trade and allows you to earn money while you're still at school. A school-based apprenticeship or traineeship also contributes credits towards your Queensland Certificate of Education (QCE).

After selecting the industry you are interested in and talking with your school and parents, your next step is to secure employment as an apprentice or trainee. An employer can be found through family and friends, by directly contacting employers and group training organisations, or by applying for advertised jobs.

Once you have secured an apprenticeship or traineeship, just let your employer know you want to study with us.

School-based apprentices and trainees do not pay fees for training at TAFE Queensland as this is funded by the Queensland Government; however you may need to pay some costs for tools and compulsory personal protective equipment, which we will outline upon enrolment. When you become a full-time apprentice or trainee after completing Year 12, you may be eligible for fee-free training for the remainder of your apprenticeship.

For more information about school-based apprenticeships or traineeships call **1800 210 210** or visit training.qld.gov.au/apprenticeshipsinfo.

QCE CREDITS

To ensure breadth of learning within a QCE, credit will accrue for new learning only. QCE points listed in this guide are indicative of new learning only. For more information please visit www.qcaa.qld.edu.au/ to assess your individual circumstances and liaise with your school careers team for further information.

Enrolment into TAFE at School courses is subject to eligibility requirements. Talk to your VET coordinator or guidance counsellor, or visit our website (tafeqld.edu.au/tafe-at-school) for more information.

*Eligibility conditions apply.

^Additional entry requirements may apply for select courses.

TERM DATES AND INTAKES

TAFE Queensland term dates align with Queensland school terms to fit with your senior studies.

TERM DATES 2024

| QUEENSLAND SCHOOLS | | TAFE QUEENSLAND | |
|--------------------|--------|---------------------|----------------------------|
| TERM 1 | START | Monday 22 January | START Monday 22 January |
| | FINISH | Thursday 28 March | FINISH Thursday 28 March |
| TERM 2 | START | Monday 15 April | START Monday 15 April |
| | FINISH | Friday 21 June | FINISH Friday 21 June |
| TERM 3 | START | Monday 8 July | START Monday 8 July |
| | FINISH | Friday 13 September | FINISH Friday 13 September |
| TERM 4 | START | Monday 30 September | START Monday 30 September |
| | FINISH | Friday 13 December | FINISH Friday 13 December |

Most TAFE at School courses have intakes in Semester 1 and/or Semester 2, so you can choose to start studying at a time that suits you.

STUDENT SUPPORT

Everyone’s journey is different and sometimes you need some extra support to achieve your study goals. We’re here to help. At TAFE Queensland our student support services are available for all of our students, making your learning experience just that little bit easier.

Learn more at tafeqld.edu.au/studentsupport.

If you are a TAFE at School student, your regular school support programs are also responsible for ensuring you receive appropriate levels of support while at TAFE. It is expected that if your school normally provides you with a participation assistant or similar, for day-to-day learning or personal support, then they also provide this support when you attend your TAFE at School course.

COST AND PAYMENT OPTIONS

Costs vary from course-to-course and you can check our website for the most up-to-date prices. You may be eligible for a range of fee-free TAFE at School courses, covered under VET in Schools (VETiS) funding, which is funded by the Queensland Government. The courses advertised as VETiS funded in this guide are dependant on eligibility requirements.

For further information, please refer to the VETiS section of training.qld.gov.au. Eligible students are entitled to one VETiS funded program only.

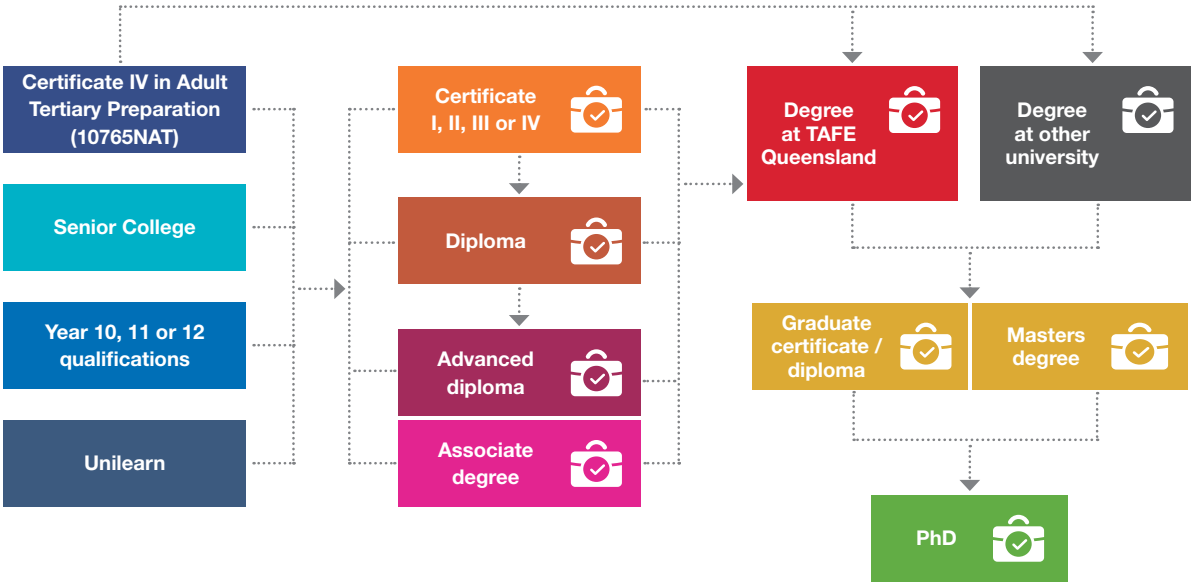
Payment plans may also be available to assist with payment of your course; however if you’re under 18 you will need a guarantor. Applications will be subject to credit checks.

For information about our withdrawal and refund policy, please visit the TAFE Queensland website: tafeqld.edu.au/policies.

PATHWAYS TO YOUR FUTURE

There are plenty of ways to land your dream career, so give yourself a head-start and fast track your studies in the process with a TAFE at School course.

Once you complete your TAFE at School course, you may be eligible for direct entry into any related TAFE Queensland diploma. When you complete your diploma, our partnerships with local universities can help guarantee you a place in a bachelor degree.



OUR PARTNER UNIVERSITIES AND HIGHER EDUCATION PROVIDERS

There’s more than one way to get into your dream university degree. TAFE Queensland has a range of pathway options and partners that can get you started on your university degree sooner.



POST-SCHOOL OPTIONS

BECOME AN APPRENTICE OR TRAINEE

Learn hands-on with the same equipment and tools used in industry, combining working for an employer and studying at TAFE Queensland, and graduate with a nationally-recognised qualification.

Applying for an apprenticeship or traineeship is very similar to applying for any other job. You need to have a current resume that lists your education, interests and referees. Studying a TAFE at School pre-apprenticeship course can boost your chances of landing your dream job by demonstrating to a potential employer that you're actively interested in their industry.

The first step is to visit an Australian Apprenticeship Support Network (AASN) provider to help connect you with an employer. Once you have secured your apprenticeship, talk to your employer about choosing TAFE Queensland as your training provider. Your employer will sort out the formalities of your training contract directly with TAFE Queensland.

For more information visit tafeqld.edu.au/apprentices.

APPLY FOR A TAFE QUEENSLAND CERTIFICATE OR DIPLOMA

After successfully completing a TAFE at School course/s you may be eligible for direct entry into any related TAFE Queensland diploma.

It's as simple as getting in contact with us and letting us know which course you want to study.

Check out our website to see our full range of courses, from certificates through to diplomas and degrees at tafeqld.edu.au/courses.

GO TO UNIVERSITY

There's more than one way to get into your dream university course. Successfully completing a diploma at TAFE Queensland can help secure you a place in a bachelor degree through our partnerships with local universities.

In many cases, you can enter your university degree straight into second year, meaning you will receive a diploma and a degree in the same amount of time it usually takes to complete a degree on its own.

Many of our diploma courses have formal articulation arrangements with some of Australia's top universities. This means your university may also give you credit for your study at TAFE Queensland, shaving time off your degree.

For more information visit tafeqld.edu.au/pathways.

OUR CAMPUSES

No other provider can match TAFE Queensland for scale and location options. With more than 50 locations across the state, we have Queensland covered no matter where you are.

To view all of our locations visit tafeqld.edu.au/locations.

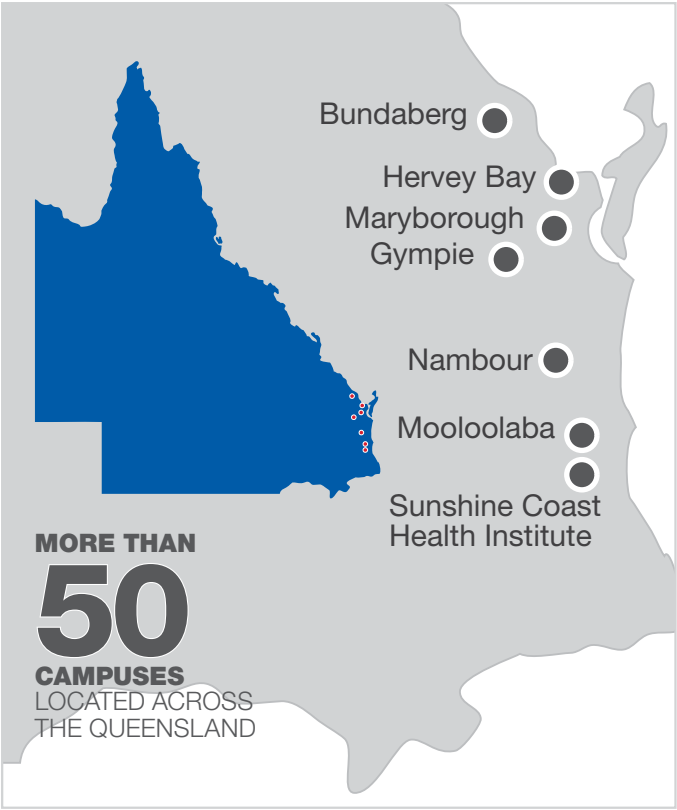
OUR FACILITIES

Step into our purpose-built facilities, where you will learn hands-on using the same tools and equipment used in industry. Put your theory into practice straight away in our clinical labs, salons, training restaurants, creative spaces, and trades workshops. Develop your skills, ability, and confidence and gain the practical experience you need to graduate job ready.

For more information visit tafeqld.edu.au/facilities.

CAMPUS LOCATIONS

- Bundaberg**
118 Walker Street
Bundaberg QLD 4670
- Mooloolaba**
34 Lady Musgrave Drive
Mountain Creek QLD 4557
- Hervey Bay**
47-95 Urraween Road
Hervey Bay QLD 4655
- Sunshine Coast Health Institute (SCHI)**
6 Doherty Street
Birtinya QLD 4575
- Maryborough**
1/131 Bazaar Street,
Maryborough QLD 4650
- Gympie**
71 Cartwright Road
Gympie QLD 4570
- Nambour**
91 Windsor Road
Nambour QLD 4560



GETTING TO CAMPUS

Most of our campuses are accessible by both private and public transport, with full details available on individual campus pages on our website at tafeqld.edu.au/locations.

If you are a full-time student, you may be eligible for a student discount on public transport. For more information or to plan your travel call 13 12 30 or visit translink.com.au.

Parking

Bus

Train

| | Parking | Bus | Train |
|-------------|---------|-----|-------|
| Bundaberg | ✓ | ✓ | |
| Hervey Bay | ✓ | ✓ | |
| Maryborough | ✓ | ✓ | |
| Gympie | ✓ | ✓ | |
| Nambour | ✓ | ✓ | ✓ |
| Mooloolaba | ✓ | ✓ | |
| SCHI | ✓ | ✓ | |

INFORMATION FOR PARENTS

It's tough being a teenager in their final years of school, trying to decide what to do with the rest of their lives. The pressure's on as early as Year 10 and it feels like results and choices will make or break their future.

It can be tough for parents too. Knowing when to intervene or when to take a step back seems impossible at times. But your behind-the-scenes role is crucial to their success.

WHY TAFE QUEENSLAND

Not everyone learns in the same way or at the same pace. At TAFE Queensland there are as many options as there are individuals, with pathway options to suit your child's needs and help them kick-start their career.

For more information visit tafeqld.edu.au/parents.

ABOUT VOCATIONAL EDUCATION AND TRAINING

Vocational education and training (VET) offers many benefits for young people looking to kick-start their careers. Perhaps they want to enter a trade, test out an industry to confirm it's right for them, or gain Queensland Certificate of Education (QCE) credits. Or maybe they need to improve or contribute towards their Australian Tertiary Admission Rank (ATAR), and are looking for a hands-on learning experience that will give them a head-start in their chosen industry. Whatever your child's plans may be, TAFE Queensland's TAFE at School program offers a pathway that will set them on the road to achieving their goal before they've even graduated high school.



PARENTS' GUIDE

FOR SURVIVING SENIOR
SCHOOLING AND BEYOND

Subscribe today to get
your free copy.

go.tafeqld.edu.au/parents-guide

BUSTING VET MYTHS

The 2017 *Perceptions are Not Reality* report from Skills Australia debunked some of the most common misconceptions about vocational education and training in Australia.

MYTH: Almost 30 per cent of Australians believe that university graduates find work more easily than VET graduates.

FACT: VET graduates have a higher employment rate than university graduates. The average employment rate of a VET graduate is 78 per cent (it's 69 per cent for university graduates).

MYTH: One-in-five Australians believe that VET graduates earn less than university graduates.

FACT: The average VET graduate actually earns similar wages to, if not more than, an average university graduate.

MYTH: Three-in-five Australians believe we need university education more than VET to thrive in a globally competitive world. Almost half those people think VET is no longer as relevant as university education.

FACT: VET aims to provide the skills we need to keep up with our quickly changing employment and industry trends. Additionally, VET provides courses for nine-out-of-10 occupations predicted to have the greatest growth of new jobs over the next five years.



SCAN HERE FOR THE
PARENTS' GUIDE

INFORMATION FOR SCHOOLS

Designed to deliver practical, workplace-specific skills and knowledge, VET covers a wide range of careers and industries.

WHY TAFE QUEENSLAND?

With more than 500 nationally-recognised qualifications, from entry-level certificates to bachelor degrees, studying at TAFE Queensland gives your students access to multiple pathways to get a head-start on their careers.

They will learn in industry-standard facilities, have access to a range of student support services, be able to take advantage of a wide range of university pathway options, and so much more.

For more information visit tafeqld.edu.au/advisors.

PARTNERSHIP WITH SCHOOLS PROGRAM

TAFE Queensland's Partnership with Schools program means school teachers can deliver training to their students at their own school. TAFE Queensland provides the school with mentor support, learning and assessment resources, and advice on training delivery and student assessment to ensure the delivery of the highest standard of industry-relevant training.

Even though students are completing their training at school, they are enrolled with TAFE Queensland and are issued with a TAFE Queensland qualification on completion of their studies.

To discuss a customised partnership arrangement for your school, please contact your local TAFE at School team.

TRAINING FOR SCHOOL TEACHERS

TAFE Queensland offers low-cost training for school teachers with relevant industry experience so they can deliver VET programs at their school.

Teachers can train in certificate I and II courses relevant to the delivery of TAFE at School courses, as well as higher level qualifications for teachers who want to broaden their skills.

Teachers with existing industry-related experience may be eligible for Recognition of Prior Learning (RPL) to earn a full or partial qualification, with gap training available.

IVET ONLINE PORTAL

TAFE Queensland has partnered with IVET to deliver greater timetable and delivery flexibility for teachers. IVET provides an online portal that enables teachers to have instant access to student progress, course information, digital resources, classroom management, PD logging, compliance, teacher qualification management, and more.

IVET currently facilitates a selection of TAFE at School courses across a range of study areas, and more will be added as development continues.

TEACHER AIDE TRAINING

TAFE Queensland also provides nationally-recognised training for teacher aides. Our strong relationships with schools means we can provide opportunities for your staff to gain knowledge and skills across a wide variety of workplace settings.

For more information visit tafeqld.edu.au/education-support or contact us today.

CONTACT US

For more information please contact your local TAFE at School team at schools.eastcoast@tafeqld.edu.au.



CAMPUS
Bundaberg, Nambour

DURATION
4 terms

STUDY MODE
Face-to-face

WORKLOAD
1 day per week

YEAR LEVEL
10, 11 & 12

QCE CREDITS
4 credits

Kick-start your career in rural operations with this entry-level qualification. This course will give you the foundation skills you need to work across a range of positions in agriculture or horticulture.

CERTIFICATE II IN RURAL OPERATIONS

COURSE CODE: AHC21216

VETiS FUNDED*

| CORE UNITS | |
|----------------|--|
| AHCWHS201 | Participate in work health and safety processes |
| AHCWRK204 | Work effectively in the industry |
| AHCWRK209 | Participate in environmentally sustainable work practices |
| ELECTIVE UNITS | |
| AHCINF203 | Maintain properties and structures |
| AHCLSK211 | Provide feed for livestock |
| AHCMOM203 | Operate basic machinery and equipment |
| AHCSOL202 | Assist with soil or growing media sampling and testing |
| AHCMOM204 | Undertake operational maintenance of machinery |
| AHCCHM201 | Apply chemicals under supervision |
| AHCBEK203 | Open and reassemble a beehive (Bundaberg only) |
| AHCBEK205 | Prepare and use a bee smoker (Bundaberg only) |
| AHCINF201 | Carry out basic electric fencing operations (Bundaberg only) |
| AHCLSK205 | Handle livestock using basic techniques (Bundaberg only) |
| AHCMOM202 | Operate tractors (Bundaberg only) |
| AHCPGD201 | Plant trees and shrubs |
| AHCLSK204 | Carry out regular livestock observation (Nambour only) |
| AHCINF202 | Install, maintain and repair farm fencing (Nambour only) |
| AHCPMG201 | Treat weeds (Nambour only) |
| AHCPCM201 | Recognise plants (Nambour only) |
| AHCIRG221 | Assist with pressurised irrigation operations (Nambour only) |



CERTIFICATE II IN ANIMAL CARE

COURSE CODE: ACM20121

VETiS FUNDED*

| CORE UNITS | |
|----------------|--|
| ACMGEN203 | Feed and water animals |
| ACMGEN204 | Assist in health care of animals |
| ACMGEN201 | Work in the animal care industry |
| ACMWHS201 | Participate in workplace health and safety processes |
| BSBCMM211 | Apply communication skills |
| ACMGEN202 | Complete animal care hygiene routines |
| ACMSUS201 | Participate in environmentally sustainable work practices |
| ELECTIVE UNITS | |
| ACMBEH302 | Provide enrichment for animals |
| ACMGEN205 | Source and provide information for animal care needs |
| ACMGEN309 | Provide basic animal first aid |
| ACMSPE314 | Provide general care of birds (Nambour only) |
| ACMSPE316 | Provide general care of domestic dogs (Bundaberg, Hervey Bay only) |
| ACMSPE320 | Provide general care of mammals |



Kick-start your career in the animal care industry and get qualified to work as an assistant dog groomer, veterinary assistant, or animal shelter attendant.



CAMPUS
Bundaberg, Hervey Bay, Nambour

DURATION
4 terms

STUDY MODE
Face-to-face

WORKLOAD
1 day per week

YEAR LEVEL
10, 11 & 12

QCE CREDITS
4 credits



CAMPUS
Bundaberg, Gympie, Hervey Bay, Maryborough Trade Training Centre, Nambour, Sunshine Coast Technical Trade Training Centre (Caloundra)

DURATION
4 terms

STUDY MODE
Face-to-face

WORKLOAD
1 day per week

YEAR LEVEL
10, 11 & 12

QCE CREDITS
4 credits

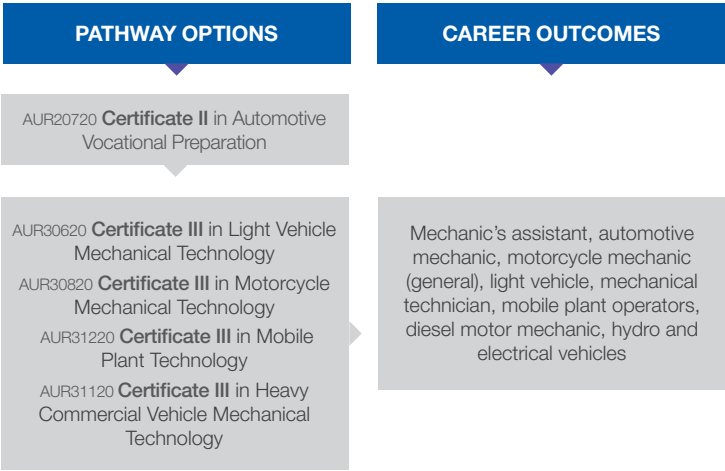
Prepare for your career in the light and heavy automotive and marine industries with this entry-level course. This qualification will give you the basic skills and knowledge needed to pursue an automotive apprenticeship.

CERTIFICATE II IN AUTOMOTIVE VOCATIONAL PREPARATION

COURSE CODE: AUR20720

VETiS FUNDED*

| CORE UNITS | |
|----------------|--|
| AURASA102 | Follow safe working practices in an automotive workplace |
| AURAEA002 | Follow environmental and sustainability best practice in an automotive workplace |
| AURTTK102 | Use and maintain tools and equipment in an automotive workplace |
| AURAF104 | Resolve routine problems in an automotive workplace |
| AURAF103 | Communicate effectively in an automotive workplace |
| AURLTA101 | Identify automotive mechanical systems and components |
| AURETR103 | Identify automotive electrical systems and components |
| ELECTIVE UNITS | |
| AURTTA127 | Carry out basic vehicle servicing operations |
| AURTTA105 | Select and use bearings, seals, gaskets, sealants and adhesives |
| AURTTJ011 | Balance wheels and tyres |
| AURTTF101 | Inspect and service petrol fuel systems |
| AURETR115 | Inspect, test and service batteries |



CERTIFICATE II IN SALON ASSISTANT

COURSE CODE: SHB20216

VETiS FUNDED*

| CORE UNITS | |
|----------------|--|
| BSBWHS201 | Contribute to health and safety of self and others |
| SHHBAS001 | Provide shampoo and basin services |
| SHBHDES001 | Dry hair to shape |
| SHBHIND001 | Maintain and organise tools, equipment and work areas |
| SHBXCCS001 | Conduct salon financial transactions |
| SHBXCCS003 | Greet and prepare clients for salon services |
| SHBXIND001 | Comply with organisational requirements within a personal services environment |
| SHBXIND002 | Communicate as part of a salon team |
| ELECTIVE UNITS | |
| SHHBAS002 | Provide head, neck and shoulder massages for relaxation |
| SHBHDES002 | Braid hair |
| SHBHIND002 | Research and use hairdressing industry information |
| SHBXCCS004 | Recommend products and services |



CAMPUS
Bundaberg, Gympie, Hervey Bay, Mooloolaba

DURATION
4 terms

STUDY MODE
Face-to-face

WORKLOAD
1 day per week

YEAR LEVEL
10, 11 & 12

QCE CREDITS
4 credits[†]

Kick-start your career in hairdressing with this pre-apprenticeship course. You'll gain the basic skills needed to work as a salon assistant.

[†]Students who have previously undertaken the Trade Taster program may only be eligible for 3 credits.



CAMPUS
Bundaberg, Gympie,
Hervey Bay, Mooloolaba

DURATION
4 terms

STUDY MODE
Face-to-face

WORKLOAD
1 day per week

YEAR LEVEL
10, 11 & 12

QCE CREDITS
4 credits


Embark upon a career in retail cosmetics with this entry-level qualification. Gain experience and skills that will help you forge a pathway as a retail sales consultant in the beauty industry.

CERTIFICATE II IN
RETAIL COSMETICS

COURSE CODE: SHB20121

VETiS FUNDED*

| CORE UNITS | |
|----------------|--|
| SHBXIND003 | Comply with organisational requirements within a personal services environment |
| SHBXWHS003 | Apply safe hygiene, health and work practices |
| SIRXIND003 | Organise personal work requirements |
| SHBXIND005 | Communicate as part of a salon team |
| SHBBMUP009 | Design and apply make-up |
| SHBBCCS005 | Advise on beauty products and services |
| SIRXOSM002 | Maintain ethical and professional standards when using social media and online platforms |
| SHBXCCS007 | Conduct salon financial transactions |
| SHBBCCS004 | Demonstrate retail skin care products |
| ELECTIVE UNITS | |
| SHBBRES003 | Research and apply beauty industry information |
| SHBBMUP011 | Design and apply remedial camouflage make-up |
| SHBBINF002 | Maintain infection control standards |
| BSBSUS211 | Participate in sustainable work practices |
| SIRRMER001 | Produce visual merchandise displays |
| SHBBMUP010 | Design and apply make-up for photography |


| PATHWAY OPTIONS | CAREER OUTCOMES |
|--|--|
| SHB20121 Certificate II in Retail Cosmetics | Make-up/skincare salesperson |
| SHB30121 Certificate III in Beauty Services | Beauty salon assistant, beauty consultant, make-up consultant |
| SHB50121 Diploma of Beauty Therapy | Salon worker, beauty technician, make-up artist |
| UNIVERSITY PATHWAYS |  For all pathway options, please refer to our Degree Pathways Guide |

CERTIFICATE I IN
CONSTRUCTION

COURSE CODE: CPC10120

VETiS FUNDED*

| CORE UNITS | |
|----------------|--|
| CPCCOM1012 | Work effectively and sustainably in the construction industry |
| CPCCWHS2001 | Apply WHS requirements, policies and procedures in the construction industry |
| CPCCWHS1001 | Prepare to work safely in the construction industry |
| CPCCOM1013 | Plan and organise work |
| CPCCCM2005 | Use construction tools and equipment |
| CPCCVE1011 | Undertake a basic construction project |
| CPCCCM1011 | Undertake basic estimation and costing |
| CPCCCM2004 | Handle construction materials |
| ELECTIVE UNITS | |
| CPCCCM2006 | Apply basic levelling procedures |
| CPCCOM1014 | Conduct workplace communication |
| CPCCOM2001 | Read and interpret plans and specifications |

| PATHWAY OPTIONS | CAREER OUTCOMES |
|--|--|
| CPC10120 Certificate I in Construction | Trade assistant/worker in carpentry, joinery, or cabinetmaking |
| Apprenticeship only | |
| CPC30220 Certificate III in Carpentry CPC31920 Certificate III in Joinery CPC30120 Certificate III in Shopfitting CPC30111 Certificate III in Bricklaying and Blocklaying CPC30620 Certificate III in Painting and Decorating CPC31020 Certificate III in Solid Plastering CPC30820 Certificate III in Roof Tiling CPC32320 Certificate III in Stonemasonry CPC31220 Certificate III in Wall and Ceiling Lining MSF30818 Certificate III in Flooring Technology CPC31320 Certificate III in Wall and Floor Tiling | Carpenter, joiner, shopfitter, bricklayer, painter, solid plasterer, roof tiler, stonemason, plasterer, flooring technician, tiler |
| CPC40120 Certificate IV in Building and Construction CPC40320 Certificate IV in Building Project Support | Trade contractor, estimator, builder – low rise, site supervisor – low rise |
| CPC60220 Advanced Diploma of Building and Construction (Management) | Builder – open, site supervisor – open, senior office manager |
| UNIVERSITY PATHWAYS |  For all pathway options, please refer to our Degree Pathways Guide |



CAMPUS
Bundaberg, Hervey Bay,
Maryborough Trade Training
Centre, Nambour

DURATION
4 terms

STUDY MODE
Face-to-face

WORKLOAD
1 day per week

YEAR LEVEL
10, 11 & 12

QCE CREDITS
3 credits[†]

Gain basic skills and increase your prospects for a career in a huge range of construction occupations with this entry-level course.

[†]Students who have previously undertaken the Trade Taster program may only be eligible for 2 credits.



CAMPUS

Bundaberg, Gympie, Hervey Bay, Maryborough Trade Training Centre, Nambour, Sunshine Coast Technical Trade Training Centre (Caloundra)

DURATION

4 terms

STUDY MODE

Face-to-face

WORKLOAD

1 day per week plus 80 hours vocational placement

YEAR LEVEL

10, 11 & 12

QCE CREDITS

4 credits[†]

Kick-start your career in plumbing. This entry-level course will set you up with the foundation skills you need to gain a plumbing apprenticeship.

[†]Students who have previously undertaken the Trade Taster program may only be eligible for 3 credits.

CERTIFICATE II IN PLUMBING SERVICES

COURSE CODE: 11054NAT

VETiS FUNDED*

| CORE UNITS | |
|----------------|--|
| CPCCOM1013 | Plan and organise work |
| CPCCCM2012 | Work safely at heights |
| CPCCCM2008 | Erect and dismantle restricted height scaffolding |
| CPCPCM2055 | Work safely on roofs |
| CPCCWHS1001 | Prepare to work safely in the construction industry |
| CPCCWHS2001 | Apply WHS requirements, policies and procedures in the construction industry |
| CPCPCM2043 | Carry out WHS requirements |
| CPCCOM1012 | Work effectively and sustainably in the construction industry |
| CPCPCM2041 | Work effectively in the plumbing services sector |
| CPCPCM2045 | Handle and store plumbing materials |
| CPCPCM2039 | Carry out interactive workplace communication |
| CPCPCM2046 | Use plumbing hand and power tools |
| CPCPCM2047 | Carry out levelling |
| CPCPCM2048 | Cut and join sheet metal |
| HLTAID011 | Provide First Aid |
| ELECTIVE UNITS | |
| CPCPCM2054 | Carry out simple concreting and rendering |
| CPCCOM1015 | Carry out measurements and calculations |



UNIVERSITY PATHWAYS



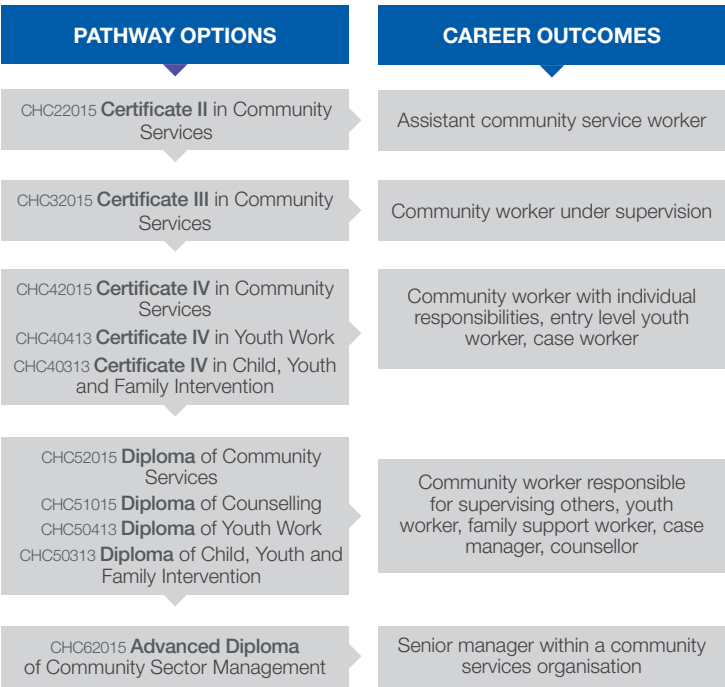
For all pathway options, please refer to our Degree Pathways Guide

CERTIFICATE II IN COMMUNITY SERVICES

COURSE CODE: CHC22015

VETiS FUNDED*

| CORE UNITS - EARLY CHILDHOOD EDUCATION AND CARE | |
|---|--|
| BSBWOR202 | Organise and complete daily work activities |
| CHCCOM001 | Provide first point of contact |
| CHCCOM005 | Communicate and work in health or community services |
| CHCDIV001 | Work with diverse people |
| HLTWHS001 | Participate in workplace health and safety |
| ELECTIVE UNITS | |
| CHCECE002 | Ensure health and safety of children |
| CHCECE056 | Work Effectively in children's education and care |
| HLTFSE001 | Follow basic food safety practices |
| CHCECE004 | Promote and provide health foods and drinks |
| CORE UNITS - COMMUNITY SERVICES | |
| BSBWOR202 | Organise and complete daily work activities |
| CHCCOM001 | Provide first point of contact |
| CHCCOM005 | Communicate and work in health or community services |
| CHCDIV001 | Work with diverse people |
| HLTWHS001 | Participate in workplace health and safety |
| ELECTIVE UNITS | |
| HLTWHS006 | Manage personal stresses in the work environment |
| BSBWOR301 | Organise personal work priorities and development |
| CHCCDE003 | Work within a community development framework |
| CHCDIV002 | Promote Aboriginal and/or Torres Strait Islander cultural safety |



UNIVERSITY PATHWAYS



For all pathway options, please refer to our Degree Pathways Guide



CAMPUS

Community Services: Gympie Mooloolaba

Early Childhood Education and Care: Bundaberg, Hervey Bay, Maryborough, Mooloolaba

DURATION

4 terms

STUDY MODE

Face-to-face, online

WORKLOAD

1 day per week

YEAR LEVEL

10, 11 & 12

QCE CREDITS

4 credits[†]

Kick-start your career in the social sector with this entry-level qualification that will get you working with your community faster.

[†]Students who have previously undertaken the Trade Taster program may only be eligible for 2 credits.



CAMPUS
Nambour

DURATION
4 terms

STUDY MODE
Face-to-face

WORKLOAD
1 day per week

YEAR LEVEL
10, 11 & 12


QCE CREDITS
6 credits

Kick-start your career in the media with this entry-level course that will prepare you for an assistant role behind the camera, or in community radio

CERTIFICATE III IN
SCREEN AND MEDIA

COURSE CODE: CUA31020

| CORE UNITS | |
|----------------|--|
| CUAWHS312 | Apply work health and safety practices |
| BSBCRT311 | Apply critical thinking skills in a team environment |
| CUAIND311 | Work effectively in the creative arts industry |
| ELECTIVE UNITS | |
| CUAWRT302 | Write simple stories |
| CUACAM211 | Assist with basic camera shoots |
| CUALGT211 | Develop basic lighting skills |
| CUASOU213 | Assist with sound recordings |
| CUACAM311 | Shoot material for screen productions |
| CUACAM312 | Rig camera infrastructure |
| CUAPOS211 | Perform basic vision and sound editing |
| CUAANM413 | Create titles for screen productions |

| PATHWAY OPTIONS | CAREER OUTCOMES |
|---|--|
| CUA31020 Certificate III in Screen and Media | Camera and lighting assistant, community radio program maker or presenter |
| CUA51020 Diploma of Screen and Media | Screen producer, interactive media designer, cinematographer |
| CUA51020 Diploma of Screen and Media (Specialist Make Up Services) Huxley School of Makeup | Professional makeup artist |
| UNIVERSITY PATHWAYS |  For all pathway options, please refer to our Degree Pathways Guide |





**CERTIFICATE II IN
ELECTROTECHNOLOGY (CAREER START)**

COURSE CODE: UEE22020

 VETiS FUNDED*

| CORE UNITS | |
|-------------|---|
| CPCCWHS1001 | Prepare to work safely in the construction industry |
| UEECD0007 | Apply work health and safety regulations, codes and practices in the workplace |
| UEECD0009 | Carry out routine work activities in an energy sector environment |
| UEECD0046 | Solve problems in single path circuits |
| UEERE0021 | Provide basic sustainable energy solutions for energy reduction in residential premises |
| UEECD0038 | Provide solutions and report on routine electrotechnology problems |
| UEECD0052 | Use routine equipment/plant/technologies in an energy sector environment |
| UEECD0021 | Identify and select components, accessories and materials for energy sector work activities |

| ELECTIVE UNITS | |
|----------------|---|
| UEECD0035 | Provide basic instruction in the use of electrotechnology apparatus |
| HLTAID009 | Provide cardiopulmonary resuscitation |
| UEERE0001 | Apply environmentally and sustainable procedures in the energy sector |
| UEECD0019 | Fabricate, assemble and dismantle utilities industry components |
| UEECD0033 | Produce products for carrying out energy sector work activities |
| UEECD0020 | Fix and secure electrotechnology equipment |

PATHWAY OPTIONS

UEE22020 **Certificate II** in
Electrotechnology (Career Start)

 Apprenticeship only

UEE30820 **Certificate III** in
Electrotechnology (Electrician)
UEE31220 **Certificate III** in
Instrumentation and Control
UEE32220 **Certificate III** in
Air-conditioning and Refrigeration
UEE32120 **Certificate III** in Appliance
Service

UEE40620 **Certificate IV** in
Electrotechnology –
Systems Electrician
UEE42622 **Certificate IV** in Hazardous
Areas – Electrical
UEE43220 **Certificate IV** in Industrial
Automation and Control

UEE50520 **Diploma** of Electronics and
Communications Engineering
UEE51020 **Diploma** of Instrumentation
and Control Engineering
UEE51220 **Diploma** of Air-conditioning
and Refrigeration Engineering

UEE62220 **Advanced Diploma** of
Electrical – Engineering
UEE60220 **Advanced Diploma** of
Electronics and Communications
Engineering

CAREER OUTCOMES

Electrical trade assistant/worker


General electrician, electronics and
communications tradesperson,
electrical instrumentation
tradesperson, air-conditioning
and refrigeration, electrical fitter
tradesperson

Electrical fitter, electrician–
special class, installation technician,
industrial automation and control
technician, electrical instrumentation
tradesperson

Technical officer specialising
in electrical, engineering,
instrumentation and control,
electronics and communications, or
refrigeration and air-conditioning

Electrical engineer, senior technical
officer specialising in electrical
technology or electronics engineering

UNIVERSITY PATHWAYS

 For all pathway options, please
refer to our Degree Pathways Guide



CAMPUS

Bundaberg, Gympie,
Hervey Bay, Maryborough
Trade Training Centre,
Nambour

DURATION

4 terms

STUDY MODE

Face-to-face

WORKLOAD

1 day per week

YEAR LEVEL

10, 11 & 12

QCE CREDITS

4 credits

Get your career in
electrotechnology started
with this entry-level
course. Build the skills and
confidence you need to
seek an apprenticeship in a
range of electrical
trade areas.



CERTIFICATE II IN
ENGINEERING PATHWAYS

COURSE CODE: MEM20413

VETiS FUNDED*

| CORE UNITS | |
|----------------|--|
| MEM13014A | Apply principles of occupational health and safety in the work environment |
| MEMPE005A | Develop a career plan for the engineering and manufacturing industry |
| MEMPE006A | Undertake a basic engineering project |
| MSAENV272B | Participate in environmentally sustainable work practices |
| ELECTIVE UNITS | |
| MEM16006A | Organise and communicate information |
| MEM16008A | Interact with computing technology |
| MEM18001C | Use hand tools |
| MEM18002B | Use power tools/hand held operations |
| MEMPE002A | Use electric welding machines |
| MEMPE003A | Use oxy-acetylene and soldering equipment |
| MEMPE004A | Use fabrication equipment |
| MSAPMSUP106A | Work in a team |

| PATHWAY OPTIONS |
|---|
| MEM20413 Certificate II in Engineering Pathways |
| MEM20105 Certificate II in Engineering (Traineeship) |

| CAREER OUTCOMES |
|--|
| Trade assistant/worker in mechanical, metal fabrication, machining, or fitting and turning |

| | |
|---|--|
|  | Apprenticeship only |
| MEM30319 Certificate III in Engineering- Fabrication Trade | Fitter and turner, metal fabricator, welder, machinist, patternmaker, moulder, locksmith, boat builder |
| MEM30219 Certificate III in Engineering- Mechanical Trade | |
| MEM30819 Certificate III in Locksmithing | |
| MEM30719 Certificate III in Marine Craft Construction | |

| |
|--|
| MEM30505 Certificate III in Engineering – Technical (CAD) |
|--|

| |
|--------------------------|
| Entry-level draftsperson |
|--------------------------|

| |
|--|
| MEM40119 Certificate IV in Engineering |
| MEM40412 Certificate IV in Engineering Drafting |

| |
|--|
| Higher engineering tradesperson, special class tradesperson, draftsman |
|--|


| |
|---|
| MEM50212 Diploma of Engineering – Technical |
| MEM50119 Diploma of Engineering – Advanced Trade |

| |
|---|
| Senior draftsman, advanced engineering tradesperson |
|---|

| |
|---|
| MEM60112 Advanced Diploma of Engineering |
|---|

| |
|-----------------------------|
| Consultant, project manager |
|-----------------------------|

| |
|---------------------|
| UNIVERSITY PATHWAYS |
|---------------------|

| |
|--|
|  For all pathway options, please refer to our Degree Pathways Guide |
|--|



CAMPUS
Bundaberg, Gympie,
Hervey Bay, Maryborough
Trade Training Centre,
Nambour

DURATION
4 terms

STUDY MODE
Face-to-face

WORKLOAD
1 day per week

YEAR LEVEL
10, 11 & 12

QCE CREDITS
4 credits

Explore your options and gain practical skills and knowledge with this entry-level engineering course. Increase your prospects of gaining an engineering apprenticeship.



CAMPUS
Bundaberg, Hervey Bay

DURATION
4 terms

STUDY MODE
Face-to-face

WORKLOAD
1 day per week.
Block training available
in Bundaberg

YEAR LEVEL
10, 11 & 12

QCE CREDITS
4 credits

Kick-start your career learning the basic skills and knowledge required to begin your journey in the hospitality industry. Collaborate in group work to become employment ready or continue with further study.

CERTIFICATE II IN HOSPITALITY

COURSE CODE: SIT20322

VETiS FUNDED*

| CORE UNITS | |
|----------------|--|
| BSBTWK201 | Work effectively with others |
| SITHIND006 | Source and use information on the hospitality industry |
| SITHIND007 | Use hospitality skills effectively |
| SITXCCS011 | Interact with customers |
| SITXCOM007 | Show social and cultural sensitivity |
| SITXWHS005 | Participate in safe work practices |
| ELECTIVE UNITS | |
| SITHFAB022 | Clean and tidy bar areas |
| SITHFAB025 | Prepare and serve espresso coffee |
| SITHFAB024 | Prepare and serve non-alcoholic beverages |
| SITXFIN007 | Process financial transactions |
| SITHFAB021 | Provide responsible service of alcohol |
| SITXFSA005 | Use hygienic practices for food safety |

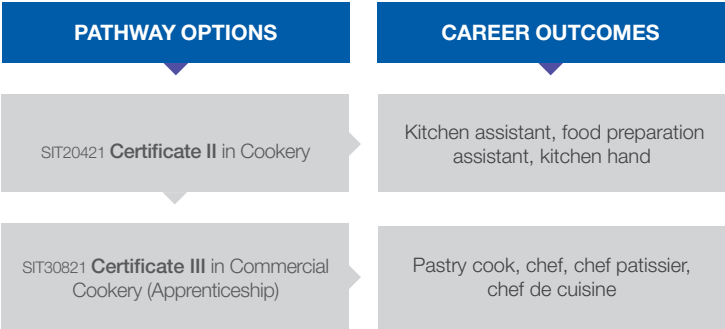


CERTIFICATE II IN COOKERY

COURSE CODE: SIT20421

VETiS FUNDED*

| CORE UNITS | |
|----------------|---|
| SITHCCC023 | Use food preparation equipment |
| SITHCCC027 | Prepare dishes using basic methods of cookery |
| SITXINV006 | Receive, store and maintain stock |
| SITHCCC034 | Work effectively in a commercial kitchen |
| SITHKOP009 | Clean kitchen premises and equipment |
| SITXFSA005 | Use hygienic practices for food safety |
| SITXWHS005 | Participate in safe work practices |
| ELECTIVE UNITS | |
| SITHCCC025 | Prepare and present sandwiches |
| SITHCCC026 | Package prepared foodstuffs |
| SITHCCC024 | Prepare and present simple dishes |
| SITHCCC028 | Prepare appetisers and salads |
| SITXFSA006 | Participate in safe food handling practices |
| SITXCOM007 | Show social and cultural sensitivity |



Set yourself on the path to a career in the kitchen with this introductory-level course. Gain the basic knowledge required to work in kitchen operations or go on to further study.

[†]Students who have previously undertaken the Trade Taster program may only be eligible for 3 credits.



CAMPUS
Coastal Cookery Trade Training Centre (Maroochydore SHS), Bundaberg, Hervey Bay

DURATION
4 terms

STUDY MODE
Face-to-face

WORKLOAD
1 day per week.
Block training available
in Bundaberg

YEAR LEVEL
10, 11 & 12

QCE CREDITS
4 credits[†]



CAMPUS
Mooloolaba

DURATION
4 terms

STUDY MODE
Face-to-face

WORKLOAD
1 day per week

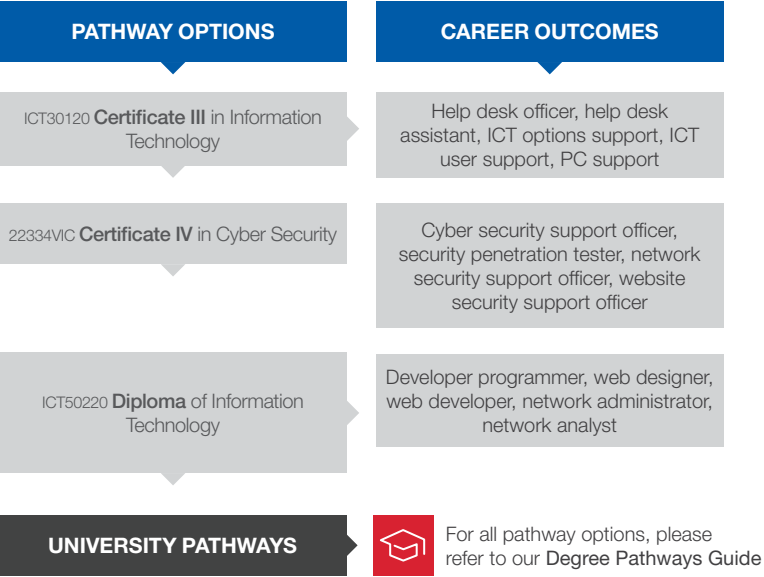
YEAR LEVEL
10 & 11

QCE CREDITS
8 credits

Explore a career in information and communications technology (ICT) with this entry-level qualification. Choose a specialisation that suits your career goals and get qualified to work across a variety of ICT roles.

CERTIFICATE III IN INFORMATION TECHNOLOGY – BASIC CYBER SECURITY AWARENESS STREAM
COURSE CODE: ICT30120

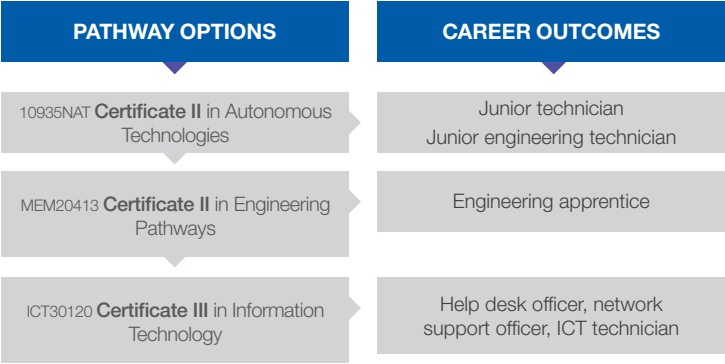
| CORE UNITS | |
|----------------|---|
| BSBCRT301 | Develop and extend critical and creative thinking skills |
| BSBXCS303 | Securely manage personally identifiable information and workplace information |
| BSBXTW301 | Work in a team |
| ICTICT313 | Identify IP, ethics and privacy policies in ICT environments |
| ICTPRG302 | Apply introductory programming techniques |
| ICTSAS305 | Provide ICT advice to clients |
| ELECTIVE UNITS | |
| BSBXCS301 | Protect own personal online profile from cyber security threats |
| BSBXCS302 | Identify and report online security threats |
| BSBXCS402 | Promote workplace cyber security awareness and best practices |
| ICTSAS213 | Maintain ICT system integrity |
| ICTSAS214 | Protect devices from spam and destructive software |
| ICTSAS215 | Protect and secure information assets (ADD) |



CERTIFICATE II IN AUTONOMOUS TECHNOLOGIES
COURSE CODE: 10935NAT

VETiS FUNDED*

| CORE UNITS | |
|----------------|--|
| ICTPRG302 | Apply introductory programming techniques |
| MSMSUP390 | Use structured problem-solving tools |
| MSMWS200 | Work safely |
| NAT10935001 | Work effectively in autonomous environments |
| NAT10935002 | Handle technical communication in autonomous environments |
| NAT10935003 | Design basic fluid power logic diagrams for autonomous systems |
| NAT10935004 | Design basic logic ladder diagrams for autonomous electric control circuits |
| NAT10935005 | Produce a documentation suite for autonomous systems |
| NAT10935006 | Configure autonomous embedded systems |
| NAT10935007 | Prepare basic programs for programmable logic controllers (PLCs) for autonomous applications |
| NAT10935008 | Use basic positioning technology |
| NAT10935009 | Conduct a basic autonomous technology project |
| VU22324 | Build a simple network and establish end to end connectivity |
| VU22338 | Configure and program a basic robotic system |
| ELECTIVE UNITS | |
| ICTNWK308 | Determine and action network problems |
| MSMWS201 | Conduct hazard analysis |



CAMPUS
Bundaberg, Nambour

DURATION
6 terms

STUDY MODE
Face-to-face

WORKLOAD
1 day per week

YEAR LEVEL
10 & 11

QCE CREDITS
4 credits



CAMPUS
Bundaberg,
Hervey Bay, Maryborough*,
Sunshine Coast
Health Institute^

DURATION
4 terms

STUDY MODE
Face-to-face

WORKLOAD
1 day per week plus 40 hours
of vocational placement

YEAR LEVEL
10, 11 & 12

QCE CREDITS
4 credits†

Start your career in the health care sector with this entry-level course and develop the basic skills needed to work within a variety of health environments in support roles.

†Students who have previously undertaken the Trade Taster program may only be eligible for 2 credits.

^Sunshine Coast Health Institute campus: Students must be fully vaccinated and provide their COVID-19 Digital Vaccination Certificate before the course commences. Masks must also be worn whilst on campus (except for outdoors)

*Delivery of this program for Maryborough is for theory units only - practical units take place at the Hervey Bay campus.

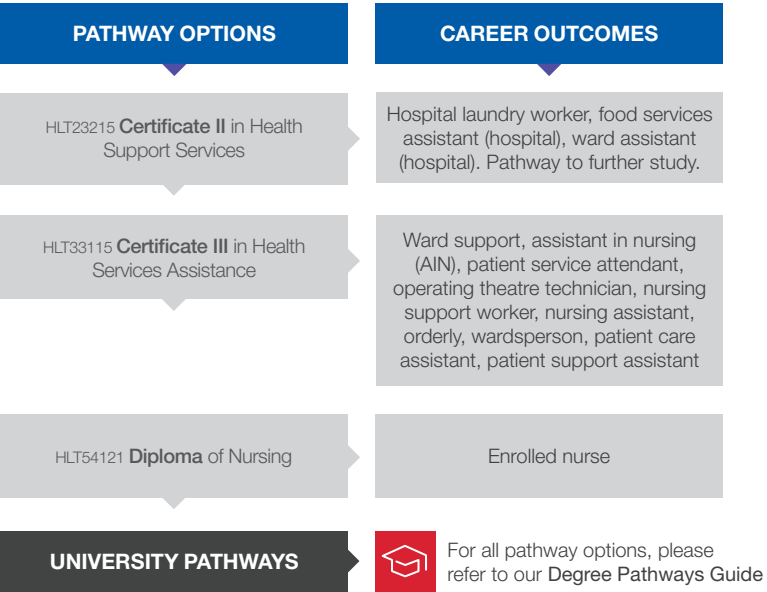
CERTIFICATE II IN HEALTH SUPPORT SERVICES

COURSE CODE: HLT23221

✓ VETiS FUNDED*

| CORE UNITS | |
|----------------|--|
| CHCDIV001 | Work with diverse people |
| CHCCOM005 | Communicate and work in health or community services |
| HLTWHS001 | Participate in workplace health and safety |
| HLTINF006 | Apply basic principles and practices of infection prevention and control |
| ELECTIVE UNITS | |

There are a number of elective units available for this program. You will receive more information about these options upon application.



CERTIFICATE III IN HEALTH SERVICES ASSISTANCE (UPGRADE)

COURSE CODE: HLT33115

Upon successful completion of the Certificate II in Health Support Services (HLT23221) an option to upgrade into the Certificate III in Health Services Assistance (HLT33115) will be available at some campus locations. Speak to the TAFE at School team to learn more about this option.



CAMPUS
Online

DURATION
4 terms

STUDY MODE
Online

WORKLOAD
1 day per week online self directed study, plus 40 hours vocational placement

YEAR LEVEL
11 & 12

QCE CREDITS
2 credits

Get a head start in the health care sector. This course is perfect for people looking for the foundation skills needed to assist in a diverse range of health care settings.



‡ HLTAID011 Provide First Aid is completed as a face-to-face workshop.

Sunshine Coast Health Institute campus: Students must be fully vaccinated and provide their COVID-19 Digital Vaccination Certificate before the course commences. Masks must also be worn whilst on campus (except for outdoors)



CAMPUS
Hervey Bay, Mooloolaba.

DURATION
4 terms

STUDY MODE
Face-to-Face

WORKLOAD
1 day per week

YEAR LEVEL
10, 11 & 12

QCE CREDITS
4 credits

Set yourself on the path to a career in the sport and recreation industry with this entry-level qualification. Gain the skills and knowledge to effectively provide support in sport and recreation programs.

CERTIFICATE II IN SPORT COACHING

COURSE CODE: SIS20321

VETiS FUNDED*

| CORE UNITS | |
|----------------|--|
| SISSSCO002 | Work in a community coaching role |
| SIRXWHS001 | Work safely |
| HLTAID011 | Provide first aid |
| ELECTIVE UNITS | |
| SISXCAI001 | Provide equipment for activities |
| SISSPAR008 | Maintain personal wellbeing as an athlete |
| SISSSCO001 | Conduct sport coaching sessions with foundation level participants |
| SISSPAR009 | Participate in conditioning for sport |



CERTIFICATE III IN FITNESS (UPGRADE)

COURSE CODE: SIS30321

| CORE UNITS | |
|----------------|---|
| SISFFIT033 | Complete client fitness assessments |
| SISFFIT032 | Complete pre-exercise screening and service orientation |
| BSBPPEF301 | Organise personal work priorities |
| BSBOPS304 | Deliver and monitor a service to customers |
| SISFFIT040 | Develop and instruct gym-based exercise programs for individual clients |
| SISFFIT047 | Use anatomy and physiology knowledge to support safe and effective exercise |
| SISFFIT035 | Plan group exercise sessions |
| SISFFIT036 | Instruct group exercise sessions |
| HLTWHS001 | Participate in Workplace Health and Safety |
| SISFFIT052 | Provide healthy eating information |
| ELECTIVE UNITS | |
| BSBSUS211 | Participate in sustainable work practices |
| SIRXSLS001 | Sell to the retail customer |



Your fitness career goals are within your reach with this entry-level qualification. This course is an essential minimum requirement to work at a gymnasium or as an exercise instructor.

*Enrolment into the upgrade is based on successful completion of the Certificate II in Sport and Recreation (SIS20115).



CAMPUS
Hervey Bay, Mooloolaba.

DURATION
4 terms

STUDY MODE
Face-to-Face

WORKLOAD
1 day per week

YEAR LEVEL
11 & 12

QCE CREDITS
4 credits

2024 COURSES

BY LOCATION

APPLICATIONS OPEN MONDAY 10 JULY 2023

Apply at tafeapply.com using the relevant application code below.

BUNDABERG

| COURSE CODE | PROGRAM NAME | QCE CREDITS* | APPLICATION CODE | PAGE NUMBER |
|-------------|---|--------------|------------------|-------------|
| CPC10120 | Certificate I in Construction | 3 | TQEC2401 | 21 |
| ACM20121 | Certificate II in Animal Care | 4 | TQEC2401 | 17 |
| AUR20720 | Certificate II in Automotive vocational preparation | 4 | TQEC2401 | 18 |
| 10935NAT | Certificate II in Autonomous Technologies | 4 | TQEC2401 | 33 |
| CHC22015 | Certificate II in Community Services | 4 | TQEC2401 | 23 |
| SIT20421 | Certificate II in Cookery | 4 | TQEC2401 | 31 |
| UEE22020 | Certificate II in Electrotechnology (Career Start) | 4 | TQEC2401 | 27 |
| MEM20413 | Certificate II in Engineering Pathways | 4 | TQEC2401 | 29 |
| HLT23221 | Certificate II in Health Support Services | 4 | TQEC2401 | 34 |
| | Certificate II in Hospitality | 4 | TQEC2401 | 30 |
| 11054NAT | Certificate II in Plumbing Services | 4 | TQEC2401 | 22 |
| SHB20121 | Certificate II in Retail Cosmetics | 4 | TQEC2401 | 20 |
| AHC21216 | Certificate II in Rural Operations | 4 | TQEC2401 | 16 |
| SHB20216 | Certificate II in Salon Assistant | 4 | TQEC2401 | 19 |

COASTAL COOKERY TRADE TRAINING CENTRE (MAROOCHYDORE SHS)

| COURSE CODE | PROGRAM NAME | QCE CREDITS* | APPLICATION CODE | PAGE NUMBER |
|-------------|---------------------------|--------------|------------------|-------------|
| SIT20421 | Certificate II in Cookery | 4 | TQEC2401 | 31 |

GYMPIE

| COURSE CODE | PROGRAM NAME | QCE CREDITS* | APPLICATION CODE | PAGE NUMBER |
|-------------|---|--------------|------------------|-------------|
| AUR20720 | Certificate II in Automotive vocational preparation | 4 | TQEC2401 | 18 |
| CHC22015 | Certificate II in Community Services | 4 | TQEC2401 | 23 |
| UEE22020 | Certificate II in Electrotechnology (Career Start) | 4 | TQEC2401 | 27 |
| MEM20413 | Certificate II in Engineering Pathways | 4 | TQEC2401 | 29 |
| 11054NAT | Certificate II in Plumbing Services | 4 | TQEC2401 | 22 |
| SHB20121 | Certificate II in Retail Cosmetics | 4 | TQEC2401 | 20 |
| SHB20216 | Certificate II in Salon Assistant | 4 | TQEC2401 | 19 |
| SIS30315 | Certificate III in Fitness (upgrade) | 4 | TQEC2401 | 37 |

HERVEY BAY

| COURSE CODE | PROGRAM NAME | QCE CREDITS* | APPLICATION CODE | PAGE NUMBER |
|-------------|---|--------------|------------------|-------------|
| CPC10120 | Certificate I in Construction | 3 | TQEC2401 | 21 |
| ACM20121 | Certificate II in Animal Care | 4 | TQEC2401 | 17 |
| AUR20720 | Certificate II in Automotive vocational preparation | 4 | TQEC2401 | 18 |
| CHC22015 | Certificate II in Community Services | 4 | TQEC2401 | 23 |
| SIT20421 | Certificate II in Cookery | 4 | TQEC2401 | 31 |
| UEE22020 | Certificate II in Electrotechnology (Career Start) | 4 | TQEC2401 | 27 |
| MEM20413 | Certificate II in Engineering Pathways | 4 | TQEC2401 | 29 |
| HLT23221 | Certificate II in Health Support Services | 4 | TQEC2401 | 34 |
| SIT20322 | Certificate II in Hospitality | 4 | TQEC2401 | 30 |
| 11054NAT | Certificate II in Plumbing Services | 4 | TQEC2401 | 22 |
| SHB20121 | Certificate II in Retail Cosmetics | 4 | TQEC2401 | 20 |
| SHB20216 | Certificate II in Salon Assistant | 4 | TQEC2401 | 19 |
| SIS20321 | Certificate II in Sport Coaching | 4 | TQEC2401 | 36 |
| SIS30315 | Certificate III in Fitness (upgrade) | 4 | TQEC2401 | 37 |

MARYBOROUGH

| COURSE CODE | PROGRAM NAME | QCE CREDITS* | APPLICATION CODE | PAGE NUMBER |
|-------------|---|--------------|------------------|-------------|
| CHC22015 | Certificate II in Community Services | 4 | TQEC2401 | 23 |
| HLT23221 | Certificate II in Health Support Services | 4 | TQEC2401 | 34 |

MARYBOROUGH TRADE TRAINING CENTRE (MARYBOROUGH SHS)

| COURSE CODE | PROGRAM NAME | QCE CREDITS* | APPLICATION CODE | PAGE NUMBER |
|-------------|---|--------------|------------------|-------------|
| CPC10120 | Certificate I in Construction | 3 | TQEC2401 | 21 |
| AUR20720 | Certificate II in Automotive vocational preparation | 4 | TQEC2401 | 18 |
| UEE22020 | Certificate II in Electrotechnology (Career Start) | 4 | TQEC2401 | 27 |
| MEM20413 | Certificate II in Engineering Pathways | 4 | TQEC2401 | 29 |
| 11054NAT | Certificate II in Plumbing Services | 4 | TQEC2401 | 22 |

MOOLOOLABA

| COURSE CODE | PROGRAM NAME | QCE CREDITS* | APPLICATION CODE | PAGE NUMBER |
|-------------|---|--------------|------------------|-------------|
| CHC22015 | Certificate II in Community Services | 4 | TQEC2401 | 23 |
| SHB20121 | Certificate II in Retail Cosmetics | 4 | TQEC2401 | 20 |
| SHB20216 | Certificate II in Salon Assistant | 4 | TQEC2401 | 19 |
| SIS20321 | Certificate II in Sport Coaching | 4 | TQEC2401 | 36 |
| SIS30315 | Certificate III in Fitness (upgrade) | 4 | TQEC2401 | 37 |
| ICT30120 | Certificate III in Information Technology | 8 | TQEC2401 | 32 |

NAMBOUR

| COURSE CODE | PROGRAM NAME | QCE CREDITS* | APPLICATION CODE | PAGE NUMBER |
|-------------|---|--------------|------------------|-------------|
| CPC10120 | Certificate I in Construction | 3 | TQEC2401 | 21 |
| ACM20121 | Certificate II in Animal Care | 4 | TQEC2401 | 17 |
| AUR20720 | Certificate II in Automotive vocational preparation | 4 | TQEC2401 | 18 |
| 10935NAT | Certificate II in Autonomous Technologies | 4 | TQEC2401 | 33 |
| UEE22020 | Certificate II in Electrotechnology (Career Start) | 4 | TQEC2401 | 27 |
| MEM20413 | Certificate II in Engineering Pathways | 4 | TQEC2401 | 29 |
| AHC21216 | Certificate II in Rural Operations | 4 | TQEC2401 | 16 |
| CUA31020 | Certificate III Screen and Media | 6 | TQEC2401 | 24 |

ONLINE

| COURSE CODE | PROGRAM NAME | QCE CREDITS* | APPLICATION CODE | PAGE NUMBER |
|-------------|---|--------------|------------------|-------------|
| AUR20720 | Certificate II in Automotive vocational preparation | 4 | TQEC2401 | 18 |
| CHC22015 | Certificate II in Community Services | 4 | TQEC2401 | 23 |
| HLT23221 | Certificate II in Health Support Services | 4 | TQEC2401 | 34 |
| SIS20321 | Certificate II in Sport Coaching | 4 | TQEC2401 | 36 |

SUNSHINE COAST HEALTH INSTITUTE

| COURSE CODE | PROGRAM NAME | QCE CREDITS* | APPLICATION CODE | PAGE NUMBER |
|-------------|---|--------------|------------------|-------------|
| HLT23221 | Certificate II in Health Support Services | 4 | TQEC2401 | 34 |

SUNSHINE COAST TECHNICAL TRADE TRAINING CENTRE (CALOUNDRA SHS)

| COURSE CODE | PROGRAM NAME | QCE CREDITS* | APPLICATION CODE | PAGE NUMBER |
|-------------|---|--------------|------------------|-------------|
| AUR20720 | Certificate II in Automotive vocational preparation | 4 | TQEC2401 | 18 |
| 11054NAT | Certificate II in Plumbing Services | 4 | TQEC2401 | 22 |

* QCE points listed are indicative of new learning and to be provided as a guide only. For more information please visit qcaa.qld.edu.au/ to assess your individual circumstances and liaise with your School Careers team for further information.

38 | tafeqld.edu.au

TAFE AT SCHOOL | 39

1300 308 233
tafeqld.edu.au

© TAFE Queensland 2023

RTO 0275 | CRICOS 03020E | HEP PRV13003

