

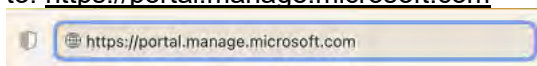
How do I enrol a BYO Mac into BYOx Link?

Before you start, please have ready the email address and password that has been supplied to you by the school. If you do not have this information, you will not be able to successfully complete the installation. Please see your school contact to obtain these details.

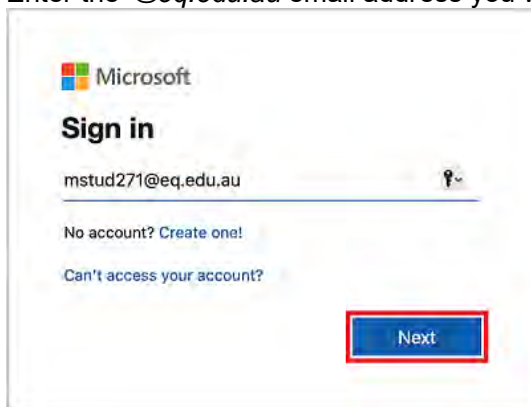
These instructions are for Ventura or later versions of macOS. You may find some of the screens look different to the ones provided here if you have an older version of macOS or there are changes made to Intune.

Step 1. Install Intune


1. To start, connect to the internet, then open Safari and go to: <https://portal.manage.microsoft.com>




2. Enter the `@eq.edu.au` email address you were provided by your school and select **Next**.

A screenshot of the Microsoft sign-in page. The Microsoft logo is at the top left. Below it is the text "Sign in". There is an input field containing the email address "mstud271@eq.edu.au". Below the input field are two links: "No account? Create one!" and "Can't access your account?". At the bottom right, there is a blue "Next" button highlighted with a red rectangular box.

3. Your username may auto fill or you will need to enter the school username and password you were provided. Then accept the terms and conditions and select **Sign in**

A screenshot of the "Managed Internet Service" sign-in page. The title "Managed Internet Service" is in red. Below it is the text "Sign in with your username and password". There are two input fields: "Username" containing "mstud271" and "Password" containing masked characters. Below the password field is a checked checkbox with the text "I agree to the conditions of use". At the bottom, there is a blue "Sign in" button highlighted with a red rectangular box. Below the button is a link "Change my password".

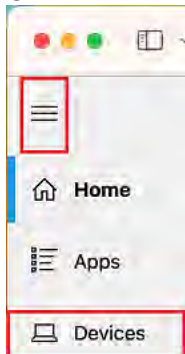
4. A prompt will pop up asking if you want to stay signed in, select **Yes**.

A screenshot of a Microsoft "Stay signed in?" prompt. The Microsoft logo is at the top left. Below it is the email address "mstud271@eq.edu.au". The main heading is "Stay signed in?". Below that is the text "Do this to reduce the number of times you are asked to sign in." There is a checkbox labeled "Don't show this again" which is unchecked. At the bottom, there are two buttons: a grey "No" button and a blue "Yes" button highlighted with a red rectangular box.

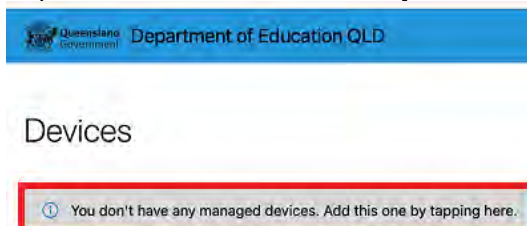
5. You will be prompted to select the type of device you are using. Click **Mac, MacBook, MacBook Pro, or MacBook Air** then select **Select**



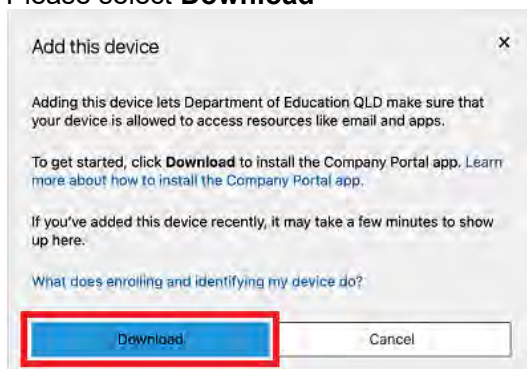
6. Click on the menu in the top left hand and select **Devices**



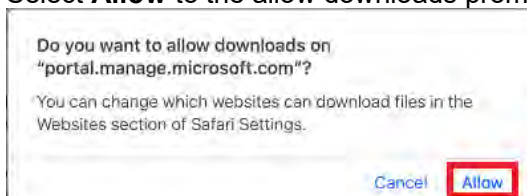
7. You may be presented with the notification - You don't have any managed devices or Tap now to tell us which device you are using or add a new device.



8. Please select **Download**



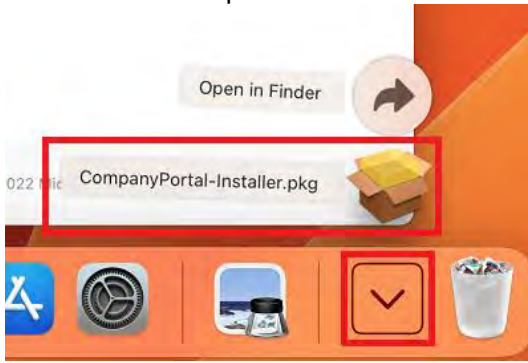
9. Select **Allow** to the allow downloads prompt.



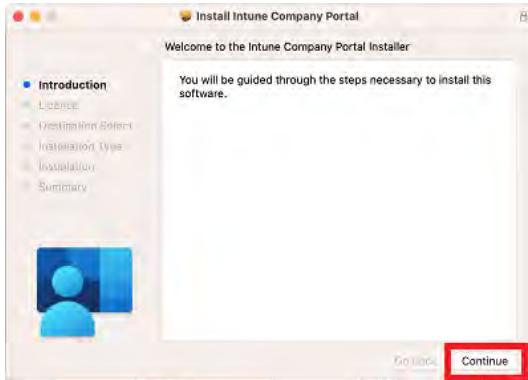
It may take a few seconds to complete.

10. Select the **Open box icon** at the bottom of your screen.

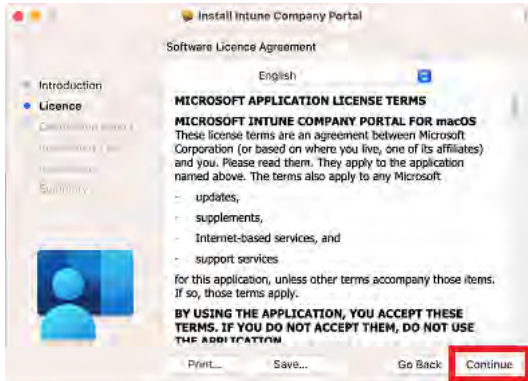
11. Then select the Open box icon next to the Company Portal Installer file.



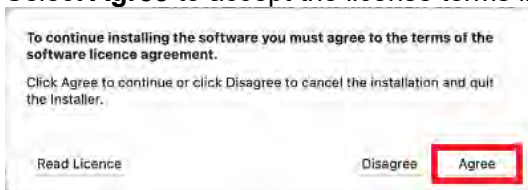
12. Please select **Continue**.



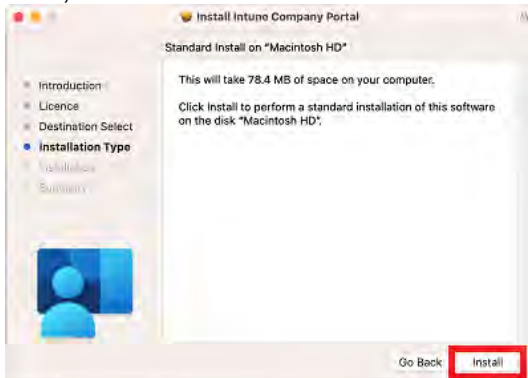
13. Please read the license terms and then select **Continue**.



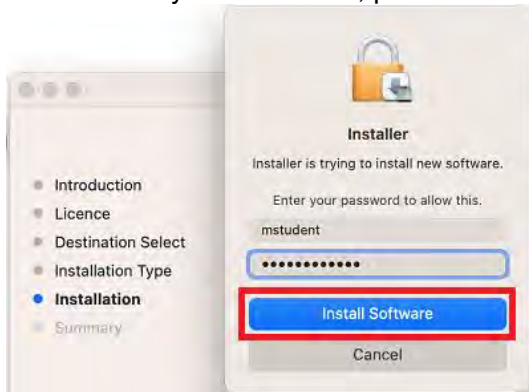
14. Select **Agree** to accept the license terms in the pop-up window.



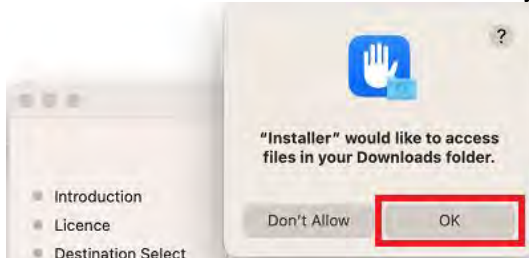
15. Next, select **Install**.



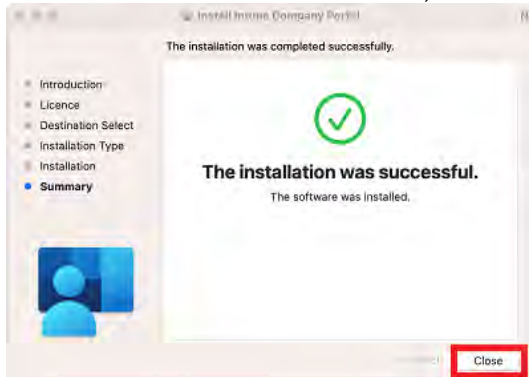
16. Please enter your username, password of your device and select **Install Software**.



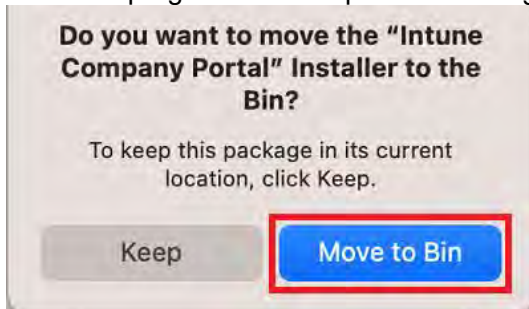
17. Select **OK** to allow the Installer access to your Downloads folder



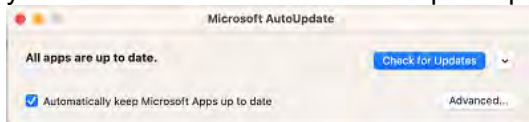
18. When the installation has finished, select **Close**.



19. Once the program has completed installing, please select **Move to Bin**.

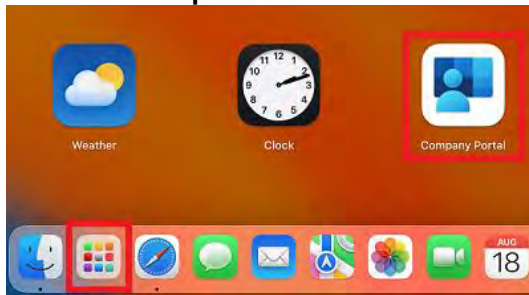


20. Microsoft AutoUpdate will appear. Select **OK** and then **Update** if there are updates waiting. You may need to repeat this step a few times. Once there are no more updates, you can close the Microsoft AutoUpdate program.

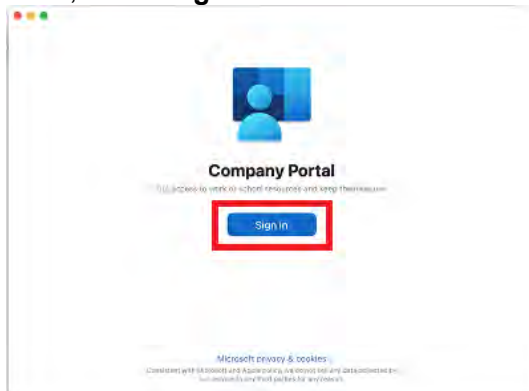


Step 2. Enrol your device into Intune

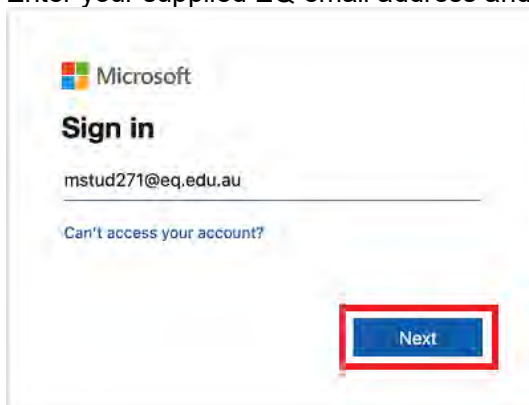
1. Select **Launchpad** and then select the **Company Portal** app.



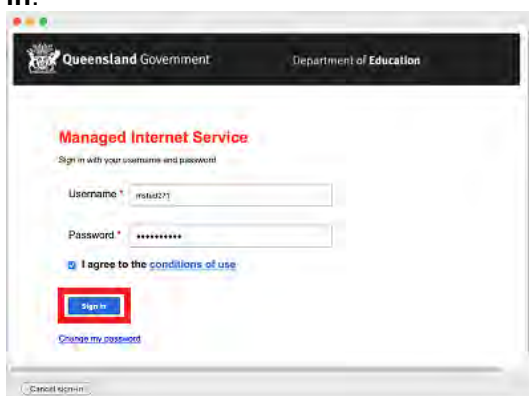
2. Then, select **Sign in**.



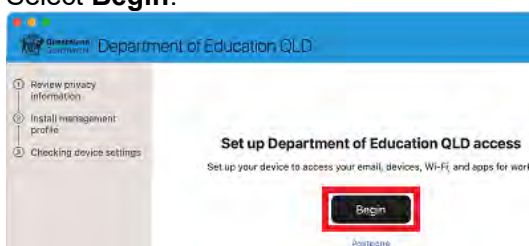
3. Enter your supplied EQ email address and select **Next**.



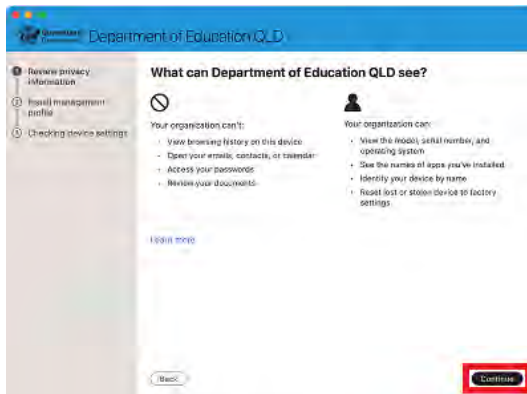
4. Enter the username, password and accept the terms and conditions. Then select **Sign in**.



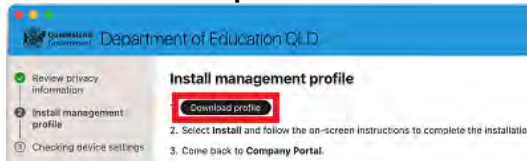
5. Select **Begin**.



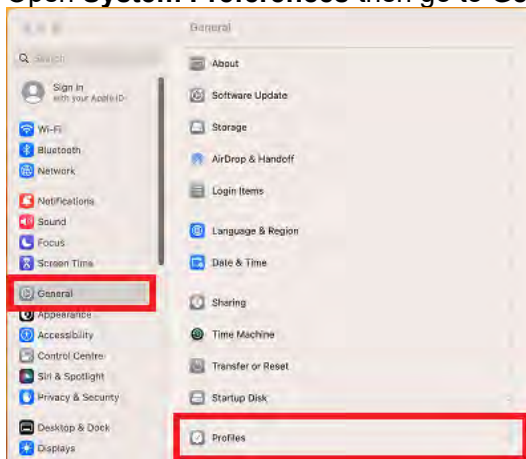
6. This explains what your school IT administrator can and cannot see on your Mac device.
Select **Continue**.



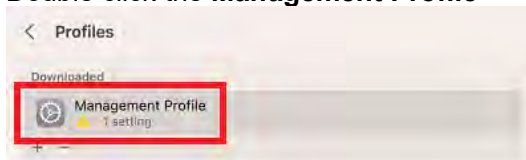
7. Select **Download profile**.



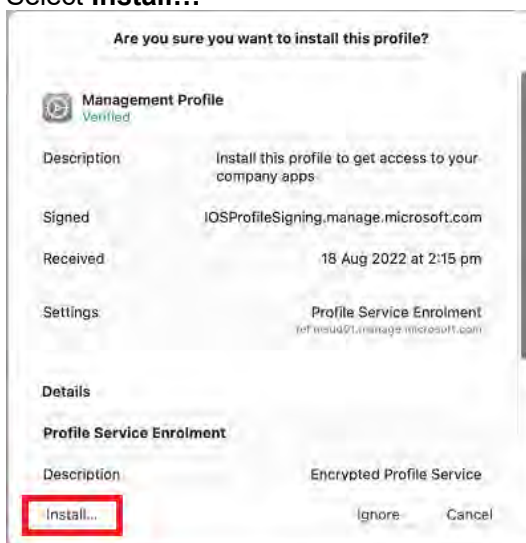
8. Open **System Preferences** then go to **General** and then **Profiles**



9. Double click the **Management Profile**



10. Select **Install...**



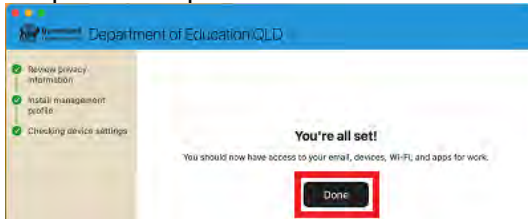
11. Enter the username and password for your device and select **Enrol**. It may take a few minutes for the management profiles to be installed.



12. When complete, it will show that it is now supervised and managed by the department.



13. Go back to Company Portal and wait as it updates the device settings, then select **Done**. It may take up to 15 minutes to finish installing. You can use the device in the meantime but please keep it connected to the internet.



14. **Close** the Company Portal.

You have now finished installing Intune.